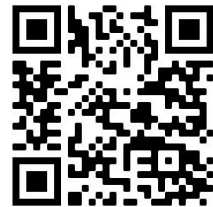




MISSION BAY HUB

THINK. ACT. PIONEER. IMPACT.



IMAGINING WHAT'S POSSIBLE



FOOD SCIENCE
"WHAT'S ON YOUR
PLATE?"



THINK. ACT. PIONEER. IMPACT.



THE MAIN IDEA

Intensive 1-Year Advanced Bridge into Health, Biotechnology and other STEM-aligned fields, with Mission Bay serving as the ultimate classroom.

A Vision 2025 student experience featuring:

- ★ Student Inquiry, Advanced Research, and Real-World Application
- ★ Professional Training & Certifications
- ★ Paid Apprenticeship within STEM major
- ★ Personalized Supports and Coaching with Mission Bay professionals
- ★ Academic course credits (e.g. Science, ELA) using mastery grading
- ★ Explicit bridge to postsecondary study and employment



Rooted in a Location that Inspires

We embed students into local professional, post-secondary, and community institutions...deeply & daily



Rooted in Student Agency

We nurture student spark, curiosity, passion, voice, choice, self-advocacy, identity and innovation



Rooted in Real World Learning

We plug into real industry/community challenges in a real professional setting, alongside real industry and community partners



Rooted in Student Autonomy

We trust and support students as professionals, with current, professional grade tools & technology



Rooted in Connection

We connect students to learn with and from the local community, as innovators, problem solvers, and change makers.



MULTI-YEAR PLAN

PLANNING, PILOTING, PARTNERSHIPS, AND PROGRAM

2021-22
Planning &
Partnerships

2022-23
Planning & Pilot
(Year 0)

2023-24
Program
(Year 1)

2024-25
Program
(Year 2)

2025-26 (GOAL)
Mission Bay
Linked Learning
Hub Opens!!

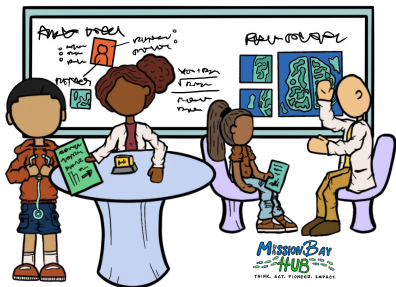
Fall 2022

- Curriculum, Program, Partnership Development
- Outreach & Recruitment
- Facility Design

Spring 2023

- 1 Semester Pilot Implementation
- Continued development for 23-24 full launch

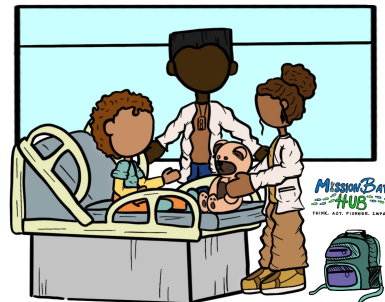




CONNECT



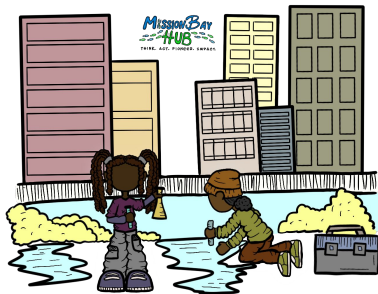
CHOOSE



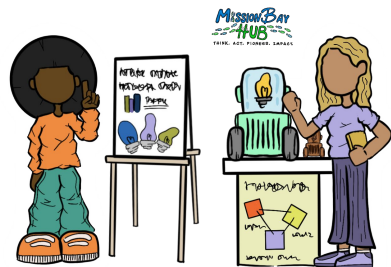
EXPLORE



EXPERIENCE



INVESTIGATE



INNOVATE

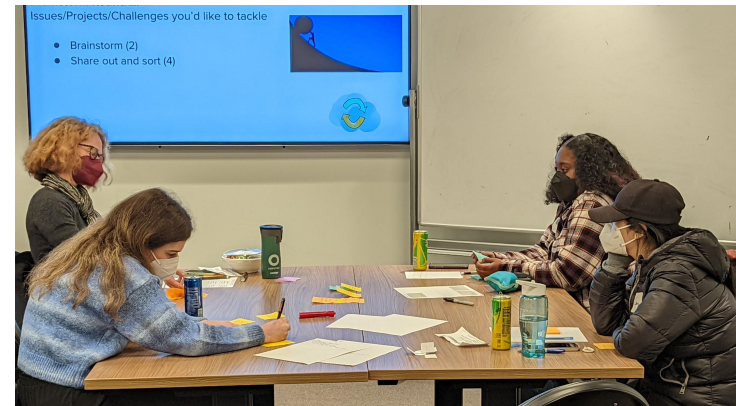
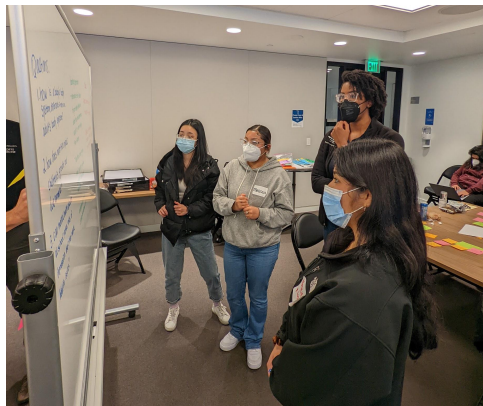
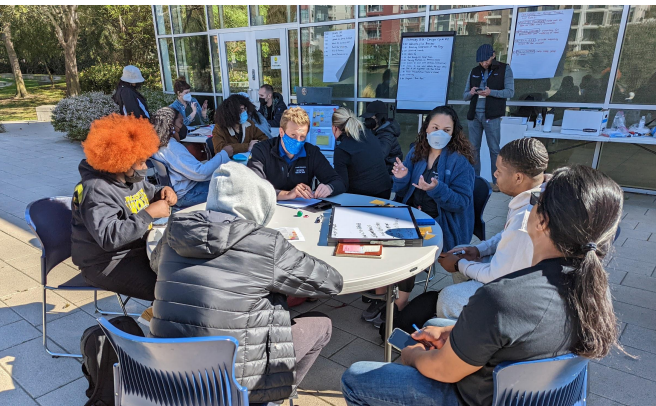
OUR PROCESS: STUDENTS AT THE CENTER

- How do we best incorporate student passion, assets, voice, and needs into the Hub design?
- What might student learning, leadership, and agency look like at the Hub?
- How might we best build excitement and communicate about the Hub with students, families, and community partners?





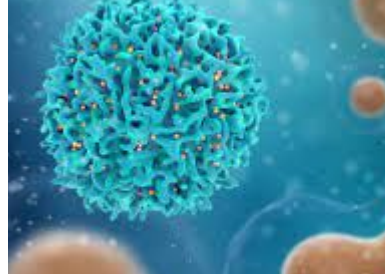
University of California
San Francisco



IMAGINING THE STUDENT EXPERIENCE...



SPORTS SCIENCE
"STEP ON, STEP OFF"



ONCOLOGY
"CANCER...PAST, PRESENT,
FUTURE"



PEDIATRICS
"0-5 THRIVE"



GERONTOLOGY
"EMBRACING AGING"



FOOD SCIENCE
"WHAT'S ON YOUR PLATE?"



MENTAL HEALTH
"MIND IN"



NEUROSCIENCE
"BRAIN SPARK"

A SCHEDULE CONCEPT

	Monday	Tuesday	Wednesday	Thursday	Friday
Morning Block 9:00 - 11:30 am	Lab Cohort A	Lab Cohort A	Flex Day <ul style="list-style-type: none"> • Apprenticeship • Flex Lab Time • Certifications • Project Time • Personalized Supports across all Labs 	Lab Cohort A	Lab Cohort A
Afternoon Block 1:00 - 3:30 pm	Lab Cohort B	Lab Cohort B		Lab Cohort B	Lab Cohort B
Early Evening Block 4:00 - 6:00 pm	Flex & Community	Flex & Community		Flex & Community	Flex & Community

CREDITS CONCEPT



FULL-YEAR INTENSIVE PROGRAM*, STUDENTS EARN

ELA (B) (10 credits)	Work Experience Education (5-10 credits)
Lab Science (D) or CTE Elective (G) (10 credits)	Paid Apprenticeship (~\$2,000 for 120 hours)

***Additional considerations for:**

- Summer Extension
- Additional credits for ELA and Lab Sciences based on student mastery
- Embedded College credits

PARTNERSHIP + INVESTMENT OPPORTUNITIES

Start-Up/Development

Planning & Design
Partners

Satellite Campus Space
(Est. Summer 2022 -
Fall 2025)

Funding:
Facility & Technology

Funding:
Planning & Piloting

Program

Paid Internships &
Apprenticeships

Scientists/Practitioners
in Residence

Exploratory WBL for
Earlier Grades

Technology Refresh

Transportation

Post-Hub Pipeline

Priority Hiring &
Interviews

Entry-Level
Employment

Multi-Year Investment
& Support

UCSF

University of California
San Francisco

**CHASE
CENTER**

 KAISER PERMANENTE.

**MISSION BAY
HUB**
THINK. ACT. PIONEER. IMPACT.


SFUSD

**GOLDEN STATE
WARRIORS**

 INVITAE



**WANT TO LEARN MORE?
READY TO GET INVOLVED?**

Contact Erik Rice
ricee@sfusd.edu

Check us out

